

2023



# HURRICANE READY GUIDE



AMANDA  
HOLLY

LEIGH  
SPANN

JEFF  
BERARDELLI

REBECCA  
BARRY

VAL  
SIMPSON

ERIC  
STONE



DEVELOP YOUR  
FAMILY PLAN  
LARGE DETAILED  
COUNTY MAPS



**JEFF  
BERARDELLI**

# 2023 MAX DEFENDER 8 HURRICANE READY GUIDE

## Welcome

Thanks for picking up the [2023 MAX Defender 8 Hurricane Ready Guide](#).

It's the time of year when all of us start looking toward the tropics and wondering what this hurricane season has in store.

That is why it is so important to equip and prepare yourself with the most recent and best possible information – the kind of information you'll find in this guide.

For the most part, all of us who live in Central Florida have been lucky the past couple of years.

In addition to this guide, [Max Defender 8 will keep you informed on TV, on WFLA.com and through social media](#) such as Twitter and Facebook.

Turn to us before, during, and after a hurricane, tropical storm or severe weather threatens. But no matter what is predicted, it only takes one storm. That impact could change your life forever if you and your family are not prepared. It's vital to have a hurricane plan, a survival kit and most importantly, stay informed.

Thanks again for picking up the Max Defender 8 2023 Hurricane Guide. And remember: The idea is to [get ready and stay ready](#), whether the big storms threaten us this season or not.



# EMERGENCY CONTACT LIST

## NUMBERS TO KEEP ON HAND

American Red Cross Disaster Assistance	1-866-438-4636
FEMA	1-800-525-0321
Florida Dept. Agriculture & Consumer Services	1-800-435-7352
Florida Dept. Financial Services Consumer Help Line	1-800-342-2762 TDD* 1-800-640-0886
Florida Div. Emergency Management	1-850-413-9969
Hurricane Help Line	1-800-227-8676
National Flood Insurance Program	1-888-356-6329 TDD* 1-800-427-5593
Poison Control Hot Line	1-800-222-1222
Max Defender 8 Hurricane Hot Line	1-800-528-0808
TRAFFIC and Travel Information	511 (FROM CELL PHONE)

SOURCES:  
INFORMATION RESOURCES PROVIDED BY: TAMPA BAY REGIONAL PLANNING COUNCIL AND EMERGENCY MANAGEMENT OPERATIONS OF THE FOLLOWING COUNTIES- CITRUS, DESOTO, HARDEE, HERNANDO, HIGHLANDS, HILLSBOROUGH, MANATEE, PASCO, PINELLAS, POLK AND SARASOTA. ADDITIONAL SOURCES: AMERICAN RED CROSS; DOMINION ENERGY; FEMA; FLASH.ORG; FLORIDA DISASTER.ORG; FLORIDA DEPARTMENT OF FINANCIAL SERVICES; NATIONAL ENDOWMENT FOR FINANCIAL EDUCATION; NATIONAL HURRICANE CENTER; POLK COUNTY SOLID WASTE DEPARTMENT; SPCA OF TAMPA BAY; USDA'S NATIONAL FOOD SAFETY DATABASE; MAPS COURTESY OF TAMPA BAY REGIONAL PLANNING COUNCIL.



THE MOST  
**ADVANCED**  
WEATHER RADAR  
IN FLORIDA



# TABLE OF CONTENTS

## FOR YOUR NAVIGATION NEEDS

Article	Maps
Developing a Family Plan — 6	Using Your County Map — 31
Protect Yourself — 8	Citrus County — 33
Protect Your Pets — 12	Hernando County — 35
Protect Your Home — 14	Hillsborough County — 37
Special Needs — 18	Manatee County — 41
Planning Prescriptions — 20	Pasco County — 43
Consumer Protection — 21	Pinellas County — 45
Flood Safety — 22	Polk County — 47
Insurance Information — 24	Sarasota County — 49
Protecting Documents — 26	
Supplies Check List — 29	
Generator Safety — 30	



JENNIFER LEIGH

# DEVELOPING A FAMILY PLAN

## A Guide to Protecting Your Family

Each hurricane season, review, practice and update your Family Plan. You will need to know your evacuation zone, obtain emergency supplies, and take steps to protect your home. Remember to make plans for friends or family members with special needs, including your pets. Everyone, children included, should have a role.

### EVACUATION

Check the maps inside this guide to see **which evacuation zone** you live in. This will determine when and if you need to evacuate during a storm. Remember: Most mobile home residents must evacuate, regardless of location. You should **plan now where to evacuate** your family. Make arrangements to stay with friends or relatives who live in a hurricane-safe zone. Have **ready food, water and must-have supplies** (see page 10). If you evacuate to an inland hotel, ask about special hurricane policies. Most importantly, make sure your destination is NOT in an evacuation zone.

### LEAVING THE AREA

Leave as early as possible. Have an **alternate route planned**. If flying, prepare for airport closings and/or canceled flights. Remember, storms can **change direction quickly and without warning**, so be careful and avoid driving directly into a storm's new path. Tune to our Radio Partners (listed on page 2 of this guide) to stay informed on traffic conditions.

### PUBLIC SHELTERS

An evacuation shelter should be your last resort. Keep in mind, different shelters may open at different times, depending on size and intensity of a storm. Do not go until an official announces a specific shelter has opened. Expect shelters to be crowded and uncomfortable.

- **Be sure to bring:**
  - Pillows and blankets or sleeping bag
  - Special dietary foods, water and prescription medicines
  - A change of clothes and personal hygiene items
  - Flashlight, radio and extra batteries
  - Infant necessities and quiet toys for children
- Important papers  
Note: Alcohol and firearms are **not** allowed; most shelters will **not** allow pets.

### IF YOU MUST EVACUATE

- Do not panic if an evacuation order is given. Make sure you give yourself enough time to leave before the weather turns bad.
- **DO NOT take chances with your life.** Turn off your electricity, water and gas if officials tell you to do so. Lock windows and doors.

**“ DO NOT TAKE CHANCES WITH YOUR LIFE. ”**

### IF YOU DO NOT EVACUATE

Make sure windows are protected and home is secured. **Clean containers for drinking water** and your bathtub for storing clean water. Plan on three gallons per person, per day for all uses. Offer your home to friends or relatives who need to evacuate. Have at least a two-week supply of nonperishable foods, including a nonelectric can opener and corded nonelectric phone.



### BUSINESS OWNERS

Every business also should have a **Disaster Plan**. For a guide, contact your local emergency management agency, Chamber of Commerce or go to [www.sba.gov/content/disaster-planning](http://www.sba.gov/content/disaster-planning)



**REBECCA  
BARRY**

# PROTECT YOURSELF

## During & After the Storm

### DURING THE STORM

- Stay indoors**, away from windows, skylights and glass doors, until the storm has officially passed. Be careful; it might appear the storm is over, but you may actually be in the eye of the hurricane. It may seem calm, but the weather could deteriorate quickly. The calm may only last 10-20 minutes.
- If you lose power** News Channel 8 weather coverage and news updates are available on your smart phone or tablet. Download our MAX Defender 8 Weather app and WFLA News app for free right now.
- Do not** use candles or kerosene lamps.
- Find a safe-room** in your home, usually an interior, windowless, reinforced room such as a closet or bathroom on the lower floor.
- Stay in your safe-room** even if you hear breaking glass. Do not expose yourself to the hurricane's winds.
- If your house starts to break apart**, cover yourself with a mattress and pillows. If your safe-room has a bathtub, get in the tub under a mattress.
- Use the phone for urgent calls** only. Don't use the phone if you hear thunder.
- If you are in a very tall building**, avoid the top floors as wind speeds are stronger the higher you go. Go to a safe-room. If flooding threatens your home, turn off electricity at the main breaker.
- If you lose power**, turn off major appliances, such as the air conditioner and water heater to reduce damage from surge when power is restored.



### AFTER THE STORM

**Be patient.** It may take awhile for emergency crews to reach your neighborhood. Restoring utilities could take several weeks. Use extreme caution. There may be dangerous situations all around you.

- If your house is damaged**, do not return until it has been officially inspected.
- Find the fire extinguisher** before turning on the power.
- Avoid all** downed power lines and water puddles.
- Report** downed or sparking power lines, broken gas lines and water mains.
- Always** supervise children.
- Avoid piling debris** near power poles. This may hinder repairs. Avoid driving because of debris and road blockage.
- Open windows** and doors to ventilate your home.
- If flooding has occurred**, have an inspection before turning on the breaker.
- Let your out-of-town** emergency contact know you are alright.
- Have valid ID.** It may be required to reenter your neighborhood.
- Don't sightsee**, especially at night.



## CALL BEFORE YOU DIG

You may be eager to remove large trees or other debris after a hurricane hits. But your underground utilities could pose a real danger. **More and more utilities are buried underground and some aren't buried as deep as you may think.** The result can be **costly, even deadly.** Before you dig, call 811 if you don't know where underground utilities are located on your property. Or go to [www.sunshine811.com](http://www.sunshine811.com) for more information.

## FOOD AND WATER SAFETY

**If power goes out,** avoid opening refrigerators and freezers to keep items from spoiling and/or thawing.

**If there are ice crystals** on freezer items, the food can safely be refrozen.

**Commercially bottled water** is good indefinitely, regardless of expiration date.

**Food in a refrigerator is safe if power is out for only a few hours.** If the temperature inside exceeds 40°F for more than two hours, perishable foods are unsafe to eat. (Get a small thermometer to keep inside your refrigerator.)

**If you're unsure** whether an item has spoiled, throw it away.

**Water you've bottled yourself** will only be good for about a week at room temperature (two weeks in the refrigerator).

**Do not drink tap water** until officials have announced it is safe.

## TO STERILIZE WATER:

Boil for at least one minute,

**OR** Add 12 drops of a 2% tincture of iodine per gallon,

**OR** Add 8 drops unscented household bleach

(with Hypochlorite as the only active ingredient) per gallon,

**OR** Use water purification tablets.

PROTECT YOURSELF | 10



To Contents

# BatteriesPlus+



## EMERGENCY PREP SOLUTIONS

PLAN NOW. STAY SAFE. WE CAN HELP.

### BATTERY BACKUP & SURGE PROTECTOR

Protect your electronics & data.



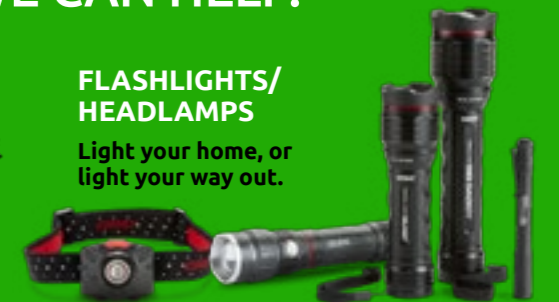
### POWER INVERTER

Power your AC & USB devices on the go.



### FLASHLIGHTS/ HEADLAMPS

Light your home, or light your way out.



### ALKALINE BATTERIES

Have extras on hand for flashlights, radios, smoke detectors & more.



### PORTABLE CHARGERS

Keep them charged & ready to go so you're not relying on electricity to power your phone.



### JUMP STARTERS

Keep a set in the trunk in case of emergency.



## ANY PURCHASE\*

\*Excludes Generators, Smart Home & Golf Cart Batteries

# 15% Off

Expires 10.31.23  
Limit 1 CDP10070  
WHEN YOU MENTION THIS AD

## VISIT ONE OF OUR AREA LOCATIONS:

Bradenton, Brandon, Clearwater, Lake Wales, Lakeland, Lakewood Ranch, Largo, Inverness, New Port Richey, Pinellas Park, Sarasota, Sebring, Spring Hill, St. Petersburg, Sun City Center, Tampa & Winter Haven

800-677-8278 | [batteriesplus.com](http://batteriesplus.com)

All registered trademarks are the property of their respective owners.



LEIGH SPANN

# PROTECT YOUR PETS

## How it Differs From Protecting You

**If conditions during a storm are not safe for you, then they're not safe for your pets either.** Include your pets in your hurricane plan. Keep in mind:

**Service animals are the ONLY pets allowed at most public shelters.** Most motels and hotels will allow smaller pets (cats, small dogs, etc.) for an additional fee or deposit but be sure to ask before you go.

**If you evacuate to a shelter,** make arrangements early to board your pet at a kennel or boarding service outside hurricane evacuation zones. Don't wait until the last minute. Space will be limited, and standard boarding fees will apply.

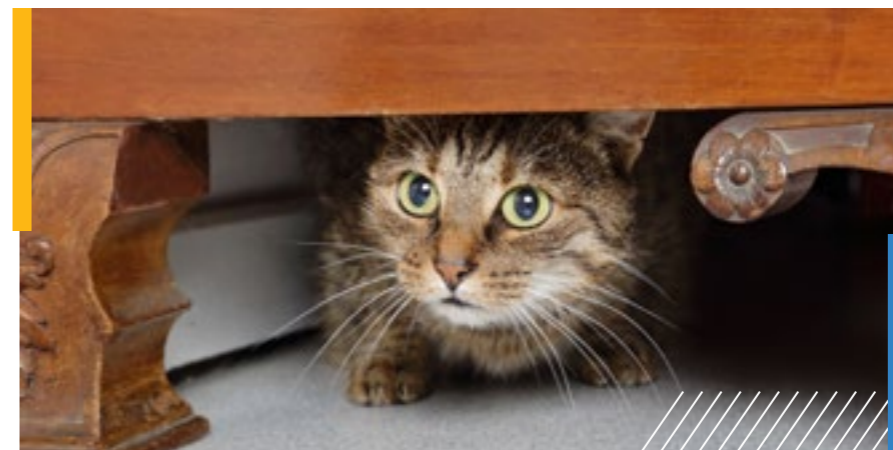
**Regardless of where you evacuate,** be sure your pet is clearly identified with a current license and rabies tag on their collar. You may consider having your pet micro-chipped.

**Try to keep your schedule** as normal as possible.

**Make sure their shots are up to date.** You may need proof of vaccinations.

**Pet stores** can help you find shelter for exotic pets.

**“INCLUDE YOUR PETS IN YOUR HURRICANE PLAN.”**



### PUT TOGETHER A SUPPLY KIT INCLUDING:

**A pet carrier** or collapsible cage (appropriate for your pet)

**Newspaper** and paper towels for clean up

**Pet food,** bottled water and any medications, enough for at least one week (don't forget bowls, a manual can opener and treats)

**Small trash bags** for waste

**Proof** of up-to-date vaccinations

**Muzzle** (if necessary)

**Current photo** of you with your pet (as proof of ownership)

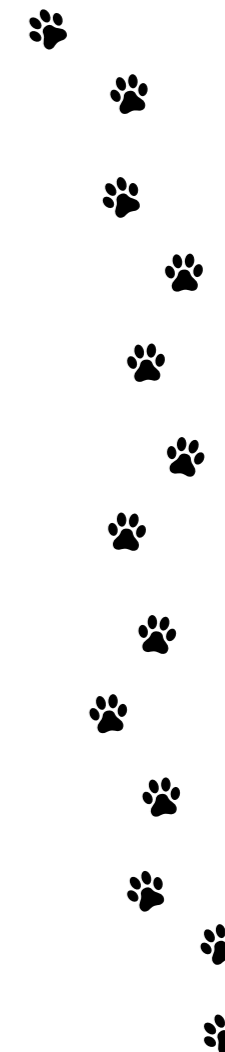
**Toys** and other comfort items

**Cat litter,** liners and pan

**First aid kit**

**Mark** all your pets' belongings with a water-proof marker

After the storm, **The Humane Society** and other animal services can help you find a lost pet or locate the owner of a pet you find. Watch your pet carefully outdoors. **Familiar scents and landmarks may change,** and your pet could easily get confused. Downed power lines, contaminated food and water are also real dangers. **Remember, pets are part of the family; don't put them at risk.** Check your county map in this guide for a list of pet friendly shelters.





AMANDA  
HOLLY

# PROTECT YOUR HOME

## How to Prepare Your Home

There are some specific actions you should take to make your home safer. To make some of these improvements, you will have to climb in the attic or crawl space with a flashlight. You may feel more comfortable with an experienced and licensed inspector, architect, engineer or contractor inspecting your home. Whatever choice you make, take time to do this well before the storm threatens.

To withstand the forces of wind associated with severe weather, remember your ABC's:

Ancor your roof

Brace entry and garage doors

Cover your windows

### ANCHOR YOUR ROOF

If your roof was **built before 1994 and is gabled**, brace all gable-end framing with horizontal and vertical beams. Also, make sure that there is wood sheathing (planks or plywood) behind the stucco of the triangular gable-end walls.

Using a caulking gun, apply a 1/4 inch bead of APA AFG-01 certified wood adhesive along an intersection of the roof deck and roof support element (rafter or truss chord) on both sides of the beam. This technique can **increase the wind uplift resistance by up to three times**, but should not be used if you are going to re-roof in the near future.

### BRACE YOUR ENTRY AND GARAGE DOORS

**Entry doors are easily damaged by high winds.** Bolt all doors with foot and head bolts with a minimum one-inch bolt throw length.

Garage doors should be able to withstand hurricane wind loads and the impacts of flying debris. If yours does not, replace with a hurricane resistant one. Approximately **80 percent of residential hurricane wind damage starts with wind entry through garage doors.**



#### FOAM

To seal a doorway, apply expanding urethane foam to the outer edges where the door meets the frame, up to two or three feet above the ground

### COVER YOUR WINDOWS

Protecting your windows is perhaps **one of the most important factors** in securing your home or office from total destruction in a hurricane or severe storm.

Make sure all doors and windows are properly caulked and/or weather stripped. Replace gravel/rock landscaping material with fire treated, shredded bark to reduce damage. **Cover all windows and glass doors** with securely fastened, impact-resistant shutters or other approved window protection systems with proper mounting fixtures or replace them with impact resistant laminated window and door systems, if feasible. Hint: You don't have to use the same system on every window. Reference: [www.flash.org](http://www.flash.org).





## AFTER A HURRICANE

**Don't dump** debris in storm drains.

**Make temporary repairs** to protect your home from further damage. Cover any holes with plywood and use heavy plastic on broken windows.

**If you can't make repairs yourself**, check contractor's references with your insurance agent, Chamber of Commerce or Better Business Bureau.

**If you rebuild, get an estimate first.** Discuss payment terms and keep any receipts. You need enough insurance to cover current construction costs and you may be required to meet new building standards. Your insurance company may be able to provide assistance for these additional costs.

**If you can't live in your home after a hurricane**, you may be entitled to additional assistance for hotel bills, meals and other living expenses. This coverage is NOT available if damage is caused by flooding or storm surge.

### SANDBAGS

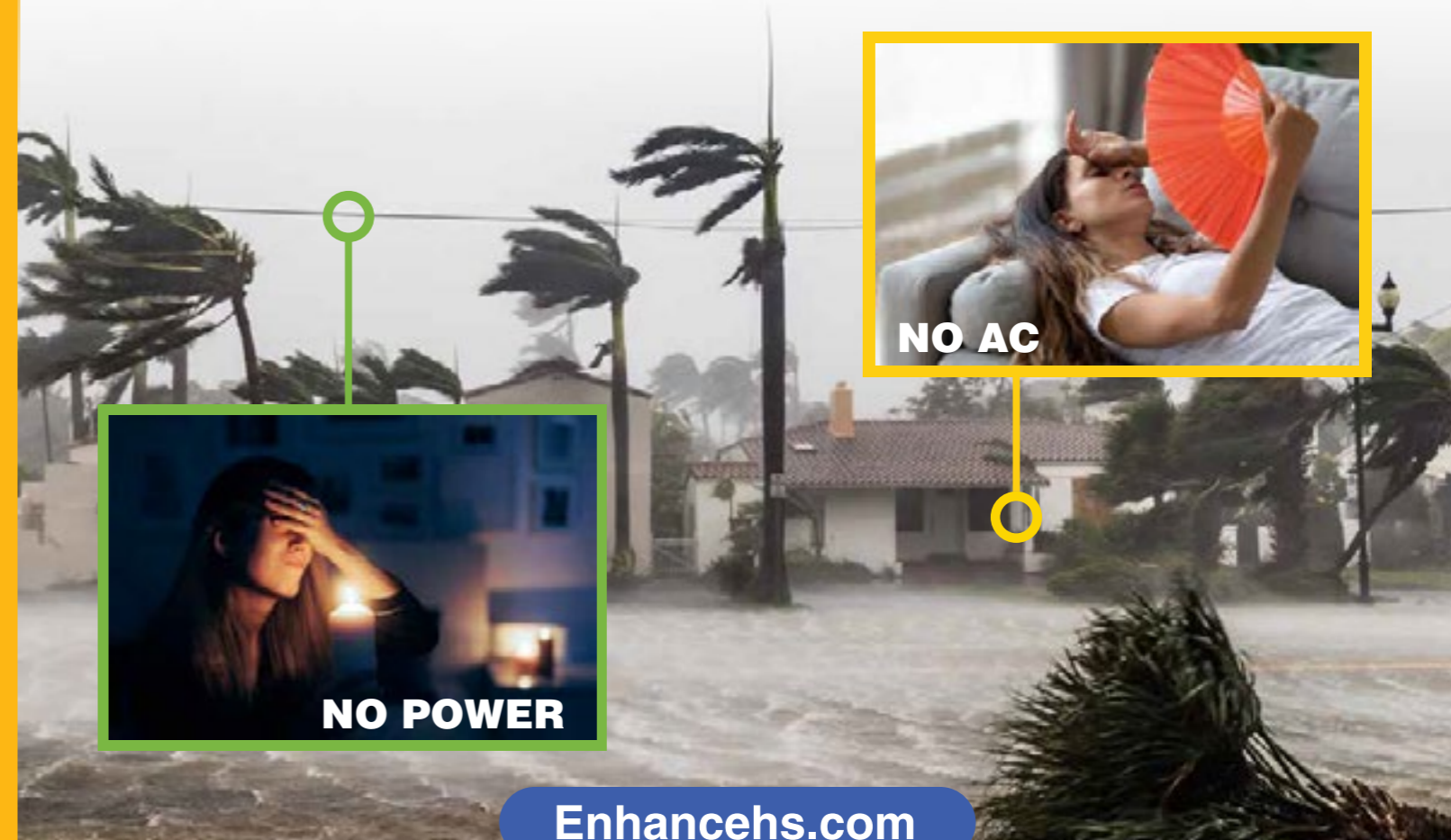
- Use sandbags to anchor a sheet of plastic to protect a doorway. Tape plastic to the wall and across the doorway, attaching a few feet up the wall and spreading away from the foundation on the ground. Place the first row of sandbags on the plastic on the ground.
- Stack on the second row, covering gaps in the bottom level of bags.
- Stack the third row of sandbags on top of the second row, in line with the first row.



## NEVER BE WITHOUT AC & POWER AGAIN

**Solar  
Battery Backup  
Tesla Powerwall Certified  
Enphase Encharge Certified  
25 Year Parts Labor Panel Warranty  
25 Year Roof Penetration Warranty**

**30 Year Production Warranty  
\$0 Upfront  
100% Financing  
Loan to Own  
Leasing Available  
Solar For Seniors**





ERIC  
STONE

# MEDICAL ACCOMMODATIONS

## Assistance for the Ill or Disabled

Register now with your county Office of Emergency Management if you or a loved one require special medical accommodations. Bring at least three days of needed medical supplies, including: special food, water, prescriptions, nebulizers, syringes, sterile swabs and oxygen equipment. Important: **Special needs shelters do not provide hands-on medical care** so a caregiver may be necessary. Prepare to have back-up medical items on hand such as a battery for ventilator and oxygen cylinders (48-hour supply).

**If respirators or other electric-dependent medical equipment is required**, prior medical arrangements with a physician should be made. **Registering with the power company is also advisable.** If oxygen or other medical supplies are required, please check with your vendor about emergency plans.

A physician must be notified if you or someone you know needs hospitalization. Keep in mind there are a limited number of resources available during disasters such as hurricanes.

For home health care and homebound patients, **inform health care provider where you will be** during a hurricane and ask about their emergency plans. Remember to take medications, written instructions regarding care, special equipment and bedding if evacuation is necessary.



## ADVICE FOR OLDER ADULTS

Those who live alone, or are without the support of family or friends, must take special precautions in the event of an emergency situation. People who are frail or disabled (either mentally or physically) may need special assistance from family members, friends or social service agencies. Older adults who are also caregivers may require outside assistance. Excessive stress and anxiety can contribute to **increased episodes of illness**—particularly for persons with heart disease and other illnesses. If an older adult lives in a nursing home, assisted living facility or boarding home, the **administrator should be contacted** to learn about the disaster plan.

## TRANSPORTATION

If you do not have transportation or are unable to drive, **assistance may be available.** Each local county offers some type of help to make sure you can get out of the storm's path. Check with your **county's Office of Emergency Management** (phone numbers are on the map pages of this guide) to find detailed information about routes to assist you in the event of an evacuation.



**JOSH  
BENSON**

# PLANNING FOR PRESCRIPTIONS

## How to Stay Ahead with Your Meds

For many people, **medication isn't a luxury** – it's a necessity. Running out could lead to other health complications or even send them **to the hospital**. That's why it's important to have an adequate supply of medicine available, especially during hurricane season.

It's always a good idea to order prescription refills **5-7 days before your medicine will run out**.

If a hurricane hits and your regular pharmacy isn't open, **bring your prescription bottle to another pharmacy**. The staff will use the information on the label to refill your medication. Also remember to bring your insurance card.

Even if you're forced to evacuate, you can still refill your prescriptions. Try a new pharmacy wherever you decide to evacuate. They may be able to **access your prescription records electronically** and help you with emergency needs. Ordering refills online or over the phone is also a good idea for fast service.

But the best advice is: **Never wait until the last minute** to refill your medicine. It's the only way to ensure you continue taking your medication as your doctor prescribed.

**“ NEVER WAIT  
UNTIL THE  
LAST MINUTE. ”**

# CONSUMER PROTECTION

Repairing your home after a disaster can be very stressful. Here are a few ways to help protect yourself from unlicensed contractors and con artists:

**Be extremely cautious** of anyone coming to your home uninvited and offering to do home repairs.

**Obtain a written** estimate or contract.

**Never** pay with cash.

**Be sure to note an address**, telephone number and license numbers.

**Ask for references** and check them out.

**Insist on start and completion dates** in the contract, and do not pay the final balance until the work is completed to your satisfaction.

**If you suspect insurance fraud**, call the Florida Department of Financial Services Consumer Help Line at 1-800-342-2762 or visit [www.myfloridacfo.com/fraud](http://www.myfloridacfo.com/fraud).

**If you suspect you've encountered scammers**, call the Attorney General's office or visit [myfloridalegal.com](http://myfloridalegal.com).





KEITH  
CATE

# FLOOD SAFETY

## For All Our Florida Flood Zones

**Avoid flooded areas**, high velocity flow areas, and areas subject to sudden flooding. Do not attempt to cross flowing streams.

**Roads may not be intact under flood waters** and the depth of the water is not always obvious. Turn around and go another way.

**If the vehicle stalls**, leave it and seek higher ground. Rising water may engulf the vehicle; sweeping it away.

**Use caution at night** when it is more difficult to recognize flood dangers.

**Keep children away from high water**, storm drains and viaducts. Throw out any food that came in contact with flood waters.

**Use flashlights** (not lanterns, torches or matches) to examine buildings. Flammables may be inside.

### FIND OUT IF YOU'RE IN A FLOOD ZONE

Flood maps are usually kept on file at your local county courthouse, municipal office or library. For additional information, call FEMA's Map Service Center at 1-877-FEMA-MAP.



# HALES AC SERVICE

AIR CONDITIONING + HEATING + IAQ

## Air Conditioning Repair Experts

AC repair experts at Hales AC are just a step away when it comes to keeping your home comfortable and cool with adequate air conditioning. If your AC system has stopped working or you have cooling problems at home, our experts will be right there to help troubleshoot, repair, or replace your air conditioner.

You can count on our live call support 24 hours a day, 7 days a week, 365 days a year to get someone to your home quickly – one of our expert technicians may already be in your neighborhood!



Book Online



(727) 761-9354 | Halesac.com



**STACIE  
SCHAIBLE**

# INSURANCE INFORMATION

## All About Insurance

A good homeowner's (or renter's) insurance policy is critical. Discuss the following with your insurance representative:

**Most homes in Florida** have a special deductible for hurricane damage. Ask about your policy and potential out-of-pocket cost.

**Prepare a complete home inventory** with photos. Videotape if possible and store in a safe-deposit box.

**Does your policy** cover the actual cash value (replacement cost, less depreciation) or replacement costs?

**Do you need insurance** riders on special items?

**Is a windstorm** insurance policy required?

**Do you need** flood insurance?

## FLOOD INSURANCE

**Standard homeowner's** policies do not cover flood damage, including storm surge, from a hurricane.

**Flood insurance is available to all residents** in all participating communities. There is usually a 30-day waiting period.

**If more than half of your home is damaged** and is not built to current standards, it will have to be elevated and retrofitted.

**Permits for any type of construction** or reconstruction in the floodplain is required.

## FILING A CLAIM

**Notify your insurance** agent as soon as possible and have your policy number on hand.

**Ask when you can** expect an adjuster to visit your home.

**Present photos and inventory** of damaged items, including their age and value.

**Have any receipts** and estimates on hand.

**Be patient.** Cases are expedited based on severity or hardship.





SHANNON  
BEHNKEN

# PROTECTING DOCUMENTS

## How to Protect Your Documents

One of the most important things to secure during a hurricane, and the most overlooked, is your important documents. Here are a few things to remember:

**Store originals** in a safe-deposit box at a bank.

**Choose a bank some distance** from your home to reduce the risk of both places suffering the same disaster.

**Get a listing of all of your bank's locations**, addresses and phone numbers.

**Copy all the documents** in the safe-deposit box and place them in an evacuation box (preferably a fire-proof box).

**Store your evacuation** box some place you can get to easily. Take it with you if you evacuate.

**Update documents** in both boxes once or twice a year.

**Write instructions concerning health** and financial decisions for your family in the event you become incapacitated.

**If you own a home**, consider opening a home equity line of credit so emergency funds will be available.

### FOR EVACUATION BOX ONLY:

- **Safe-deposit** box information (location, contents and key)
- **Cash**, a few rolls of quarters and traveler's checks

### SAFE-DEPOSIT BOX OR EVACUATION BOX:

- Insurance policies (life, auto, homeowners, renters, etc.)
- Copies of health insurance information (insurance card, doctor's name and number, prescriptions, allergies and immunizations)
- Photocopy of driver's license
- Birth, Death and Marriage certificates
- Social Security card
- Passport
- Will and living will
- Mortgage/property deeds
- Adoption papers
- Military records
- Car titles
- Trust documents
- Tax return(s)
- Written instructions for family members
- List of emergency contacts, (family, friends, lawyer, financial advisors, etc.)
- Personal property inventory (item description, serial number, receipt and photograph or video)

### OTHER DOCUMENTS TO CONSIDER:

- Home improvement records /receipts
- Warranties and receipts for major purchases
- Appraisals of jewelry, collectibles, artwork, etc.
- Credit card records
- Retirement account records
- Recent checking, savings and investment account statements
- Rental agreement and/or lease
- Recent pay stub and employee benefits information
- Backup disks of critical computerized information
- Negatives of irreplaceable personal photographs (with protective plastic sleeves)

# DON'T GET LEFT IN THE DARK.



BosElectric.com



## Bo's Electric is your WHOLE HOME GENERATOR EXPERT.

We have helped thousands of homeowners in Southwest Florida achieve comfort and peace of mind during hurricane season.

SCHEDULE AN ESTIMATE

813-708-6506

PROUDLY SERVING SOUTHWEST FLORIDA FOR 50 YEARS

FAMILY & VETERAN OPERATED

### NEED A GENERATOR?

Get \$1,000 Back + Free Service for your first year

### ALREADY HAVE A GENERATOR?

Free Monitoring Equipment and Installation with purchase of a Diamond Maintenance Plan

Stay comfortable and safe during hurricane season with a whole home generator from Bo's Electric.

24/7 SUPPORT

CERTIFIED TECHNICIANS & ELECTRICIANS

LICENSED CONTRACTORS

*\*Applies to New Estimates Only*

Google ★★★★★

"I had a generator installed a little over a year ago and have already had it save me from outages at least 3x. Every time it came on and worked flawlessly."

-Steve L.



# MUST HAVE SUPPLIES

## Your Hurricane Checklist

### NONPERISHABLE ITEMS

- |                                                       |                                                           |
|-------------------------------------------------------|-----------------------------------------------------------|
| <input type="checkbox"/> Canned Meat                  | <input type="checkbox"/> Crackers and Cookies             |
| <input type="checkbox"/> Canned Fruits and Vegetables | <input type="checkbox"/> Coffee, Tea or Drink Boxes       |
| <input type="checkbox"/> Canned Soups and Chili       | <input type="checkbox"/> Peanut Butter and Jelly          |
| <input type="checkbox"/> Dried Foods                  | <input type="checkbox"/> Pudding                          |
| <input type="checkbox"/> Dried Fruits and Nuts        | <input type="checkbox"/> Powdered Milk                    |
| <input type="checkbox"/> Cereal                       | <input type="checkbox"/> Evaporated Milk or Parmalat Milk |

- Cash (ATMs may not work after the storm)
- Drinking Water (at least a 7-day supply; 1 gallon per person per day)
- Prescription Medicine (2-week supply)
- Two Ice Chests w/Ice (one for ice, one for food)
- Baby Supplies (diapers, wipes, baby food/formula)
- Manual Can Opener
- Flashlights / Lanterns
- Battery-operated Radio and Clock (TV if available)
- Spare Batteries (2 spare sets for each device)
- Toilet Paper and Hygiene Items
- First Aid Kit
- Bleach for Sterilization (unscented with Hypochlorite the only active ingredient)
- Iodine or Water Purification Tablets
- Disposable Plates, Glasses and Utensils
- Plastic Garbage Bags
- Disinfectant
- Soap, Hand Sanitizer and Dish Detergent
- Insect Repellent and Sunscreen
- Corded, Nonelectric Phone
- Camera and Film
- Books, Magazines, Toys
- Plastic Sheeting / Tarp
- Duct or Masking Tape
- Nails, Rope, Lumber, Tools
- Rain Gear
- Fire Extinguisher
- Fuel for Generators and Cars
- Propane Gas (for grills)
- Charcoal and Lighter Fluid
- Waterproof Matches



VAL  
SIMPSON

# GENERATOR SAFETY

## Things to Consider Before You Buy

Before buying a generator, consider the following:

What appliances will you run?  
Do you need a portable or stationary generator?  
Do you need multiple outlets or multiple types of outlets?

### OTHER TIPS TO CONSIDER:

**Never run a generator indoors** OR in your garage. Find a well-ventilated area away from your home.

**Do not connect your generator** directly to your home's wiring. Always use heavy-duty, indoor/outdoor rated extension cords to connect to the generator.

**Do not attempt to refuel** your generator while it is running. Turn off all appliances connected to the generator, then turn off the generator. Let it cool before you attempt to refuel.

**Read and follow the manufacturer's guidelines** listed in your owner's manual for correct operating procedures and power output capabilities. Don't try to run more appliances than your generator can handle.

**Check the oil** every time you add gas.

**Plug appliances** directly into the generator.

**Save gas by alternating appliances.** For example, refrigerators can be kept cool by supplying power eight hours a day. Do not store fuel indoors. Gasoline (and other flammable liquids) should be stored outside of living areas in properly labeled, non-glass safety containers. They should not be stored in a garage if a fuel-burning appliance is in the garage. The gasoline vapors can travel invisibly along the ground and easily be ignited.

**Always have a fully charged,** approved fire extinguisher located near the generator.

# USING YOUR COUNTY MAP

## Before you enter the Maps Part of this Guide

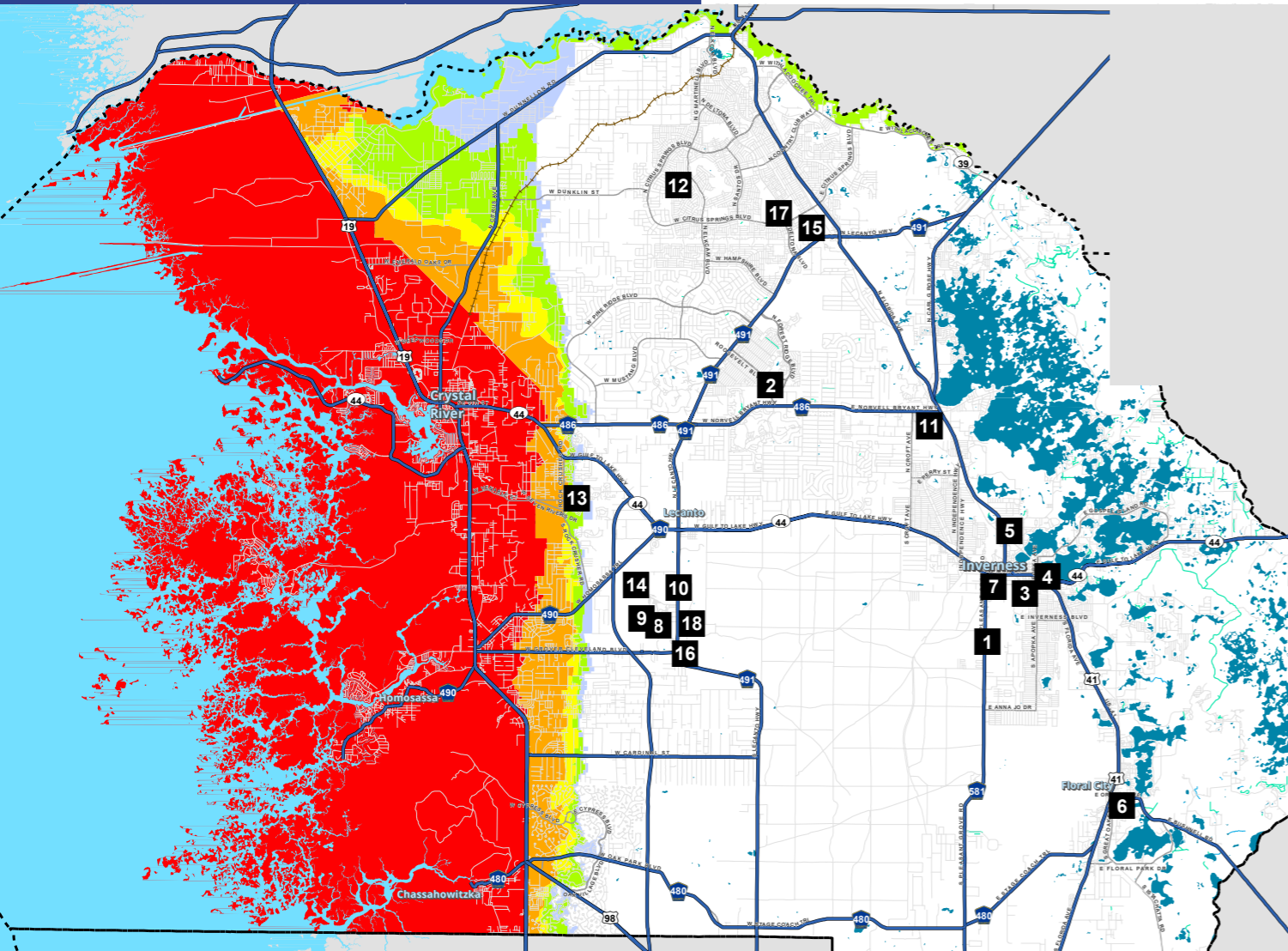
- 1 Locate where you live and work on the map.
- 2 Determine whether you are in an evacuation area, and if so, what level (**color** explained in the Legend).  
If you are in an evacuation area, or mobile home/manufactured home/RV, decide where you will go if ordered to evacuate.  
**Your choices include:**
  - Home of a relative or friend outside the evacuation zone
  - Hotel/motel outside the evacuation zone (make arrangements early)
  - Leave the area entirely
  - As a last resort go to a public shelter
- 3 If you must go to a public shelter, **use your county map to decide which one is convenient.** Make sure you verify the shelter is open before you go. Many shelters are local schools. The abbreviations ES, MS, and HS (elementary school, middle school, and high school) are used on the shelter list.

### HURRICANE THREAT

- **The colored areas** on the maps are vulnerable to storm surge. Storm surge is the saltwater flooding that rushes over coastal areas when the core of the hurricane crosses land.
- **Storm surge causes** a path of destruction wiping out structures in its path. This is a life-threatening situation for anyone who ignores evacuation orders and stays in vulnerable areas.
- **Hurricanes are categorized** on a scale of 1 to 5 depending on wind strength. The evacuation zones are color-coded to designate the level of storm surge likely to occur with the five categories.
- **If you live in an area** ordered to evacuate, gather your emergency supplies, secure your home and leave immediately. Failure to obey an evacuation order is a violation of Florida law.
- **Note: All those** in mobile homes/manufactured homes/RVs must evacuate for all evacuation orders, regardless of where you are located.



# CITRUS COUNTY



Find your closest Evacuation Shelter on the map.

#	Evacuation Shelter	Address
1	PLEASANT GROVE ELEMENTARY SCHOOL	630 PLEASANT GROVE ROAD, INVERNESS
2	FOREST RIDGE ELEMENTARY SCHOOL	2927 NORTH FOREST RIDGE BLVD., HERNANDO
3	CITRUS HIGH SCHOOL	600 WEST HIGHLAND BLVD., INVERNESS
4	INVERNESS PRIMARY SCHOOL	206 SOUTH LINE AVENUE, INVERNESS
5	INVERNESS MIDDLE SCHOOL	1950 U.S. HIGHWAY 41 NORTH, INVERNESS
6	FLORAL CITY ELEMENTARY SCHOOL	8457 EAST MARVIN STREET, FLORAL CITY
7	WITHLACOCHEE TECHNICAL COLLEGE (RECEPTION CENTER)	1201 WEST MAIN STREET, INVERNESS
8	LECANTO PRIMARY SCHOOL	3790 WEST EDUCATIONAL PATH, LECANTO
9	LECANTO MIDDLE SCHOOL	3800 WEST EDUCATIONAL PATH, LECANTO
10	LECANTO HIGH SCHOOL	3810 WEST EDUCATIONAL PATH, LECANTO
11	HERNANDO ELEMENTARY SCHOOL	2975 E TRAILBLAZER LANE, HERNANDO
12	CITRUS SPRINGS ELEMENTARY SCHOOL	3570 WEST CENTURY BLVD., CITRUS SPRINGS
13	ROCK CRUSHER ELEMENTARY SCHOOL	814 SOUTH ROCK CRUSHER ROAD, HOMOSSASSA
14	CREST SCHOOL	2600 SOUTH PANTHER PRIDE DRIVE, LECANTO
15	CITRUS SPRINGS MIDDLE SCHOOL	150 WEST CITRUS SPRINGS BLVD., CITRUS SPRINGS
16	CENTRAL FLORIDA COMMUNITY COLLEGE	3800 SOUTH LECANTO HIGHWAY, LECANTO
17	CENTRAL RIDGE ELEMENTARY SCHOOL	185 WEST CITRUS SPRINGS BLVD., CITRUS SPRINGS
18	RENAISSANCE CENTER	3630 WEST EDUCATIONAL PATH, LECANTO

## NOT ALL SHELTERS MAY BE OPEN!

Citizens are urged to listen to local television or radio stations, or visit the Sheriff's Office website, [sheriffcitrus.org](http://sheriffcitrus.org), to find out which shelters are going to be opened.

## Hurricane Threat

The color coded areas on the map are vulnerable to storm surge. Storm surge is produced by water being pushed towards the shore by the force of the winds moving around the storm.

Storm surge creates a path of destruction, wiping out structures as it rapidly surges inland and then recedes. This is a life threatening situation for anyone who ignores evacuation orders and stays in vulnerable areas.

Hurricanes are categorized on a scale of 1 to 5, depending on wind strength and destructive power.

### County Evacuation Guidelines

Potential Storm Surge Heights (in feet)

Evacuation Level	Surge Height	Evacuation Requirements
A	Up to 15'	Evacuate red areas and all mobile home/RV residents
B	Up to 20'	Evacuate red and orange areas and all mobile home/RV residents
C	Up to 28'	Evacuate red, orange, and yellow areas and all mobile home/RV residents
D	Up to 35'	Evacuate red, orange, yellow, and green areas and all mobile home/RV residents
E	Up to 42'	Evacuate red, orange, yellow, green, and purple areas and all mobile home/RV residents

Areas shown in white are non-evacuation zones

Evacuation Routes

My Evacuation Level is (fill below):

Residents in mobile homes, boats, RVs, and manufactured homes **MUST EVACUATE** no matter where you are located in the county.

## CHECK YOUR EVACUATION LEVEL

- A) Red | You evacuate for all colors
- B) Orange | You evacuate for all but red
- C) Yellow | You evacuate for all but red + Orange
- D) Green | You evacuate for Green + Purple
- E) Purple | You evacuate for only purple

All Mobiles evacuate as if in a RED Zone.

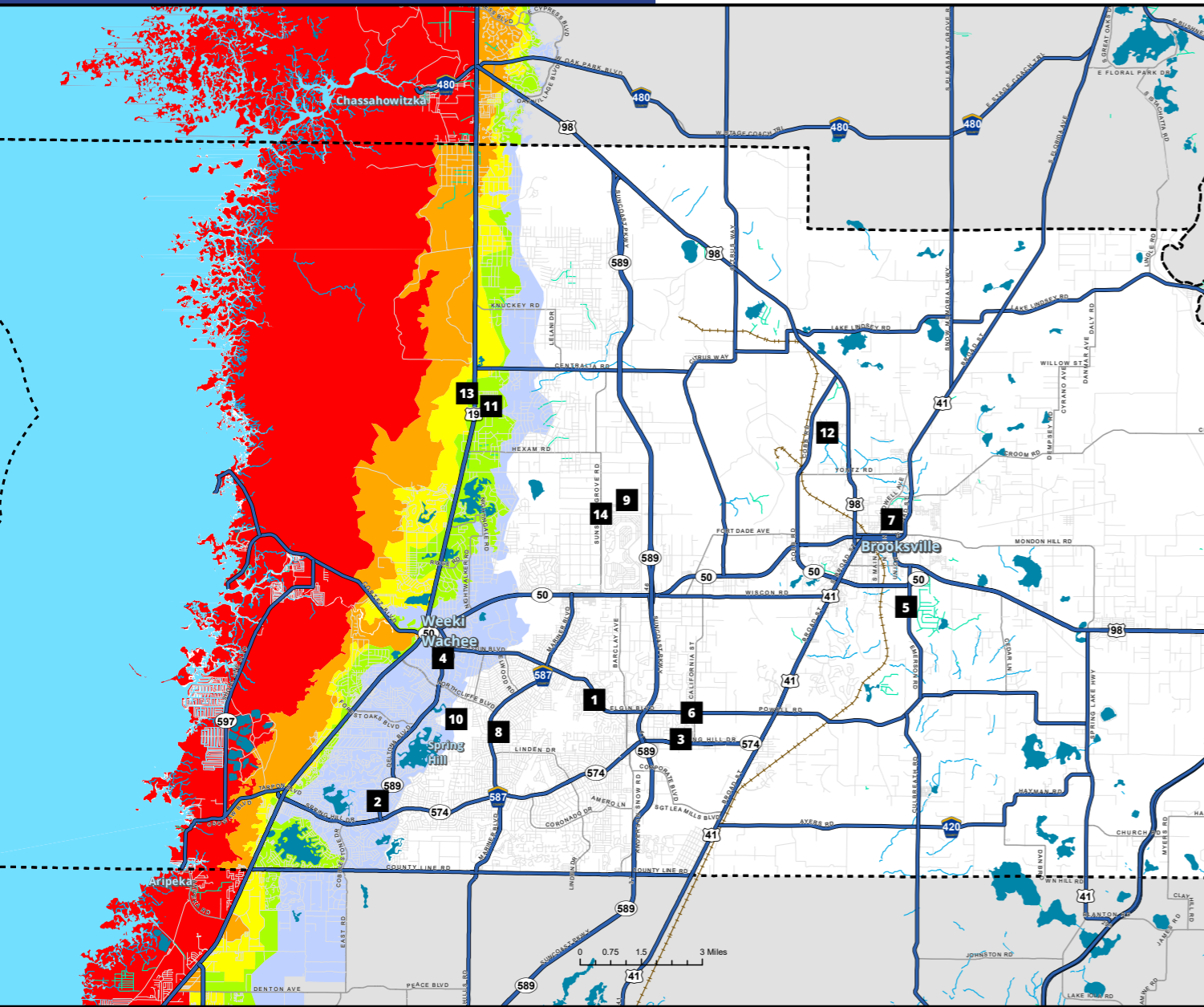


Pet-Friendly Shelter



Special Needs Shelter Only

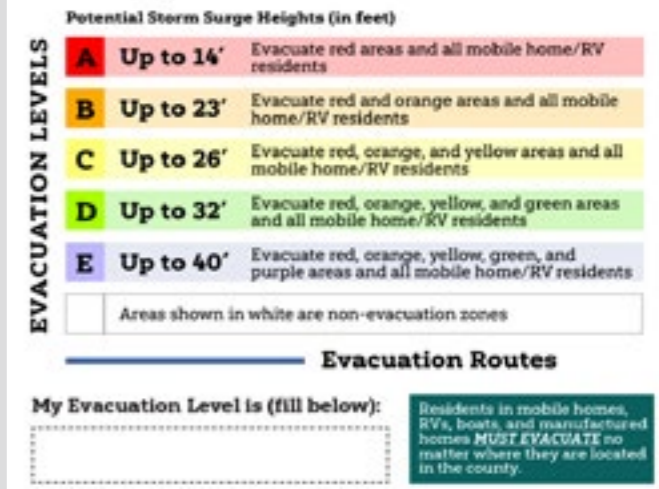
# HERNANDO COUNTY



## Find your closest shelter on the map.

#	Shelter Name	Address
1	Challenger K-8 School	13400 Elgin Blvd., Spring Hill, 34609
2	Deltona Elementary School	2055 Deltona Blvd., Spring Hill, 34606
3	Nature Coast Technical High School	4057 California St., Brooksville, 34604
4	Fox Chapel Middle School	9412 Fox Chapel Lane, Spring Hill, 34606
5	Moton Elementary School	7175 Emerson Road, Brooksville, 34601
6	Chocachatti Elementary School	4135 California St., Brooksville, 34604
7	Hernando High School	700 Bell Ave., Brooksville, 34601
8	Springstead High School	3300 Mariner Blvd., Spring Hill, 34609
9	West Hernando Middle School	14325 Ken Austin Prkwy, Brooksville, 34613
10	Explorer K-8 School	10252 Northcliffe Blvd., Spring Hill, 34608
11	Weeki Wachee High School	12150 Vespa Way, Weeki Wachee, 34614
12	D.S. Parrott Middle School	19220 Youth Drive, Brooksville, 34601
13	Winding Waters K-8 School	12240 Vespa Way, Weeki Wachee, 34614
14	Central High School	14075 Ken Austin Prkwy, Brooksville, 34613

## County Evacuation Guidelines



## CHECK YOUR EVACUATION LEVEL

- A) Red | You evacuate for all colors
- B) Orange | You evacuate for all but red
- C) Yellow | You evacuate for all but red + Orange
- D) Green | You evacuate for Green + Purple
- E) Purple | You evacuate for only purple

All Mobiles evacuate as if in a RED Zone.



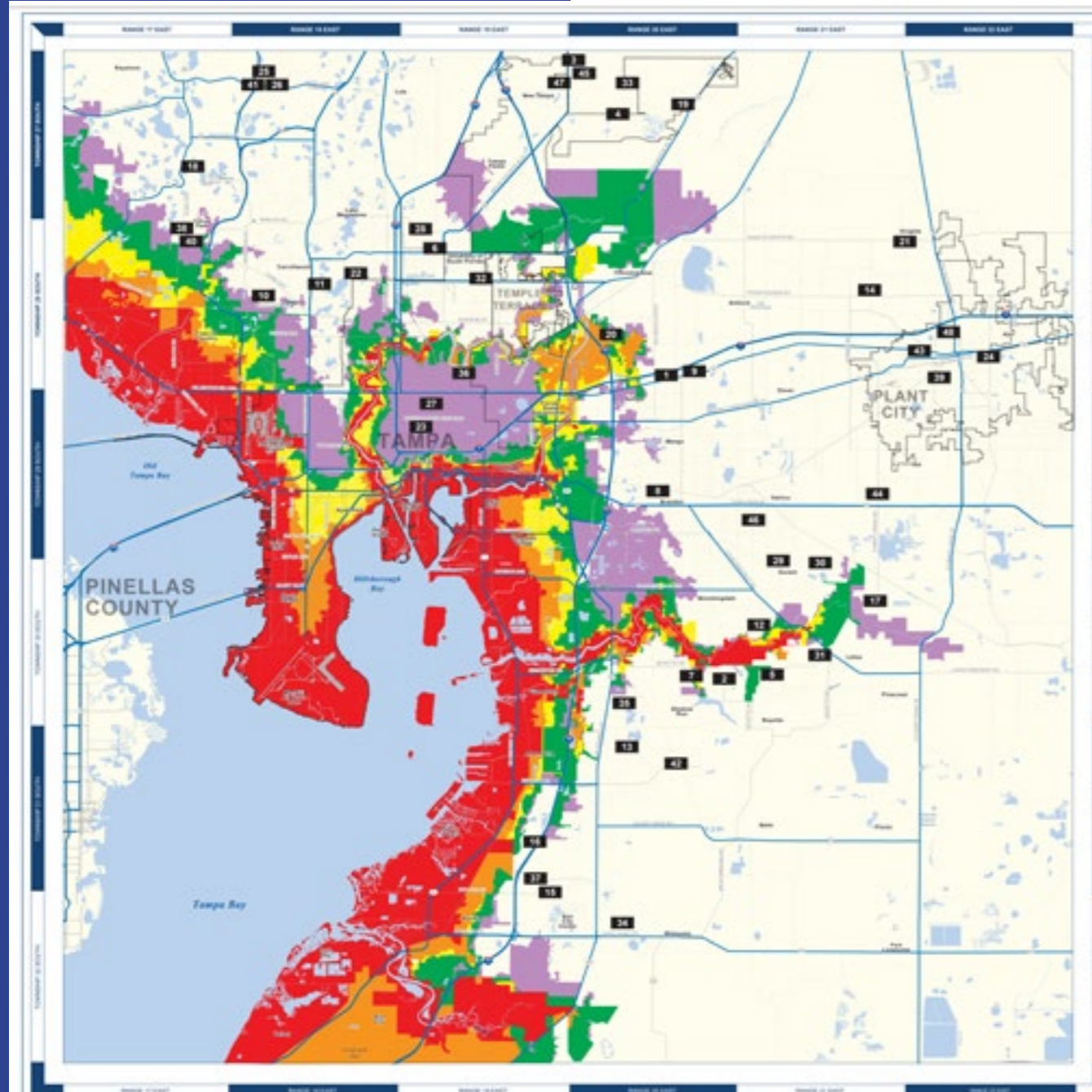
## Hurricane Threat

The color coded areas on the map are vulnerable to storm surge. Storm surge is produced by water being pushed towards the shore by the force of the winds moving around the storm.

Storm surge creates a path of destruction, wiping out structures as it rapidly surges inland and then recedes. This is a life threatening situation for anyone who ignores evacuation orders and stays in vulnerable areas.

Hurricanes are categorized on a scale of 1 to 5, depending on wind strength and destructive power.

# HILLSBOROUGH COUNTY



## 2023 EVACUATION ZONES



Office of the County Administrator  
**Bonnie M. Wise**  
 Performance, Data, & Analytics Department  
 Geospatial Services Division  
 Applied GIS Section  
 601 E. Kennedy Blvd.  
 Tampa, Florida 33601-1110

### Locator Map



### 2023 Evacuation Zones May, 2023

**NOTE:** Every reasonable effort has been made to ensure the accuracy of this map. Hillsborough County does not assume any liability arising from the use of this map. THIS MAP IS PROVIDED WITHOUT WARRANTY (OF ANY KIND), either expressed or implied, including, but not limited to, the implied warranties of merchantability and fitness for a particular purpose.

**SOURCES:** U.S. Census Bureau, State and County Quickfacts, Data derived from 2010 Census of Population and Housing. This map has been prepared for the inventory of real property found within Hillsborough County and is compiled from recorded deeds, plats, and other public records. It has been based on BEST AVAILABLE data. Population and housing unit density are computed by dividing the total population or number of housing units within a geographic entity for example, United States, state, county, place by the land area of that entity measured in square kilometers or square miles. Density is expressed as both "people or housing units per square kilometer" and "people or housing units per square mile" of land area.

Users of this map are hereby notified that the aforementioned public primary information sources should be consulted for verification of the information contained on this map.

Author: JAL  
 Publisher: JAL/PHD  
 File Name: Evacuation Zones and Emergency Shelter.sxd

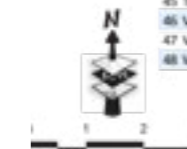
### Legend

#### EVACUATION ZONES

Evacuation Level	Wind Velocity (MPH)	Potential Tide Heights (ft)	Areas to be Evacuated
A	74 to 85	To 1'	Red areas plus all mobile home residents.
B	86 to 110	To 1'	Red and Orange areas plus all mobile home residents.
C	111 to 130	To 2'	Red, Orange, and Yellow areas plus all mobile home residents.
D	131 to 155	To 3'	Red, Orange, Yellow, and Green areas plus all mobile home residents.
E	156 and over	To 3'	Red, Orange, Yellow, Green, and Purple areas plus all mobile home residents.

#### SHELTER

Shelter Name	Address	Pets
1 Arnewood High School	12000 US Highway 92	No
2 Barrington/Stowers	5625 Village Center Dr.	Yes
3 Barbel's Middle	9190 Imperial Oaks Blvd.	Yes
4 Benito Middle	10100 Cross Creek Blvd.	No
5 Beurs Elementary	5170 Osprey Ridge Dr.	No
6 Bowers-Whitley / Muller	13609 N. 23rd St.	No
7 Boyette Springs Elementary	10141 Sedgebrook Dr.	No
8 Brandon High School	1301 Victoria St.	No
9 Burnett Middle	1010 N Kingsway Rd.	Yes
10 Cannella Elementary	10707 Nixon Rd.	No
11 Carrollwood Elementary	1516 McFarland Rd.	No
12 Cimino Elementary	4329 Culbreath Rd.	No
13 Collins Elementary	12424 Summerfield Blvd.	No
14 Cork Elementary	3501 N Cork Rd.	No
15 Cypress Creek Elementary	4040 19TH Ave. NE	No
16 Dorothy York Elementary UUU	5895 Covington Garden Dr.	No
17 Durant High School	4348 Cougar Path	Yes
18 Hammond Elementary	8008 N Mobley Rd.	No
19 Heritage Elementary	18201 East Meadows Rd.	No
20 Jennings Middle	9125 Governors Rd.	No
21 Knights Elementary	4815 N Keene Rd.	No
22 Lake Mag Elementary	2002 Pine Lake Dr.	No
23 Lockhart Elementary	3719 N 17TH St.	No
24 Marshall Middle	18 S Maryland Ave.	No
25 Martinez Middle	5603 W Lutz Lake Fern Rd	No
26 McKittrick Elementary	5503 Lutz Lake Fern Rd.	No
27 Middleton High School	4801 N 22nd St	Yes
28 Mort Elementary	1806 Bears Ave.	No
29 Mulrennan Middle	4215 Durant Rd.	No
30 Nelson Elementary	9413 Durant Rd.	No
31 Newsome High	16550 Fishhawk Blvd.	No
32 Pizzo Elementary	11701 Bull Run	No
33 Pride Elementary	10920 Uptons Dev Dr.	No
34 Reddick Elementary	325 West Lake Dr.	No
35 Sessums Elementary	11525 Ramble Creek Dr.	No
36 Sheehy Elementary	6402 N 40TH St.	No
37 Shields Middle	15732 Beth Shields Wy.	Yes
38 Sickles High School	7950 Gunn Highway	Yes
39 Simmons Career Center	1201 W Grant St.	No
40 Smith, SGT Paul Middle	14303 Citrus Pointe Dr.	No
41 Steinbrenner High School	5575 W. Lutz Lake Fern Rd.	Yes
42 Summerfield Elementary	11990 Big Bend Rd.	No
43 Tandon Middle	501 N Woodrow Wilson	No
44 Turkey Creek Middle	5005 Turkey Creek Rd.	No
45 Turner Elementary	9020 Imperial Oaks Blvd.	No
46 Valrico Elementary	609 S Miller Rd.	No
47 Wharton High School	20150 Bruce B Downs Blvd.	No
48 Wilson Elementary	702 English St.	No



Emergency Hot Line	EMERGENCY PHONE NUMBERS
Hillsborough County Emergency Call Center	813.271.9999
Hillsborough County Emergency Management	813.271.3000
Hillsborough County Building Department	813.271.9800

As we follow updates to COVID-19, the healthy & safety of our customers and employees is our priority.



# PROTECT YOUR HOME & FAMILY FROM HURRICANES

with Replacement Windows from a Company You Can Trust!

## When it Comes to Replacing Your Windows You Can Trust WEATHER TITE WINDOWS

- Energy Efficiency. Every window and door we install exceeds Energy Star requirements.
- Our Windows, Doors and Sliding Glass Doors, are Miami-Dade Certified providing the utmost protection for you and your family.
- Lifetime Guarantee on Installation and Product. Our employees are highly trained in window installation from PGT University to ensure the perfect fit for the lifetime of your windows.
- Our "Triple Check Process" Guarantees Accuracy from Start to Finish. This high level of attention to detail ensures your installation goes right the first time.
- Our Trust Program Offers NO MONEY DOWN Options or Pay at Installation. \*We take all the risk so you don't have to.
- We Want You to Be 5 STAR WEATHER TITE HAPPY!  
Your satisfaction is our highest priority.



Call us today, anytime day or night, to schedule your **FREE, NO OBLIGATION** estimate!

**813-908-0131 | WEATHERTITOWINDOWS.COM**

Architectural Shingle | Clay/Cement Tile | Metal | Stone-coated Steel & More!



# UNIVERSAL Roof & Contracting



## Worried About Your Roof?

Florida sees it's harshest weather between June and November. This is usually when homeowners find out if their roof has any defects because they find a leak, see shingles missing or notice other symptoms. We can remedy any defects before a storm takes advantage and causes further damage to your home.

If it's been over a year since your last roof inspection then it's about time to have a licensed roofing contractor take a look. Let us help you be confident your roof can weather the storm.



PROUD INSTALLER OF  
OWENS CORNING® ROOF SYSTEMS



THE PINK PANTHER™ & © 1964-2022 MGM. All Rights Reserved.

Free Platinum Protection Warranty† Upgrade for Veterans & First Responders\*

**CALL NOW TO SCHEDULE A COMPLIMENTARY ROOF EVALUATION!**

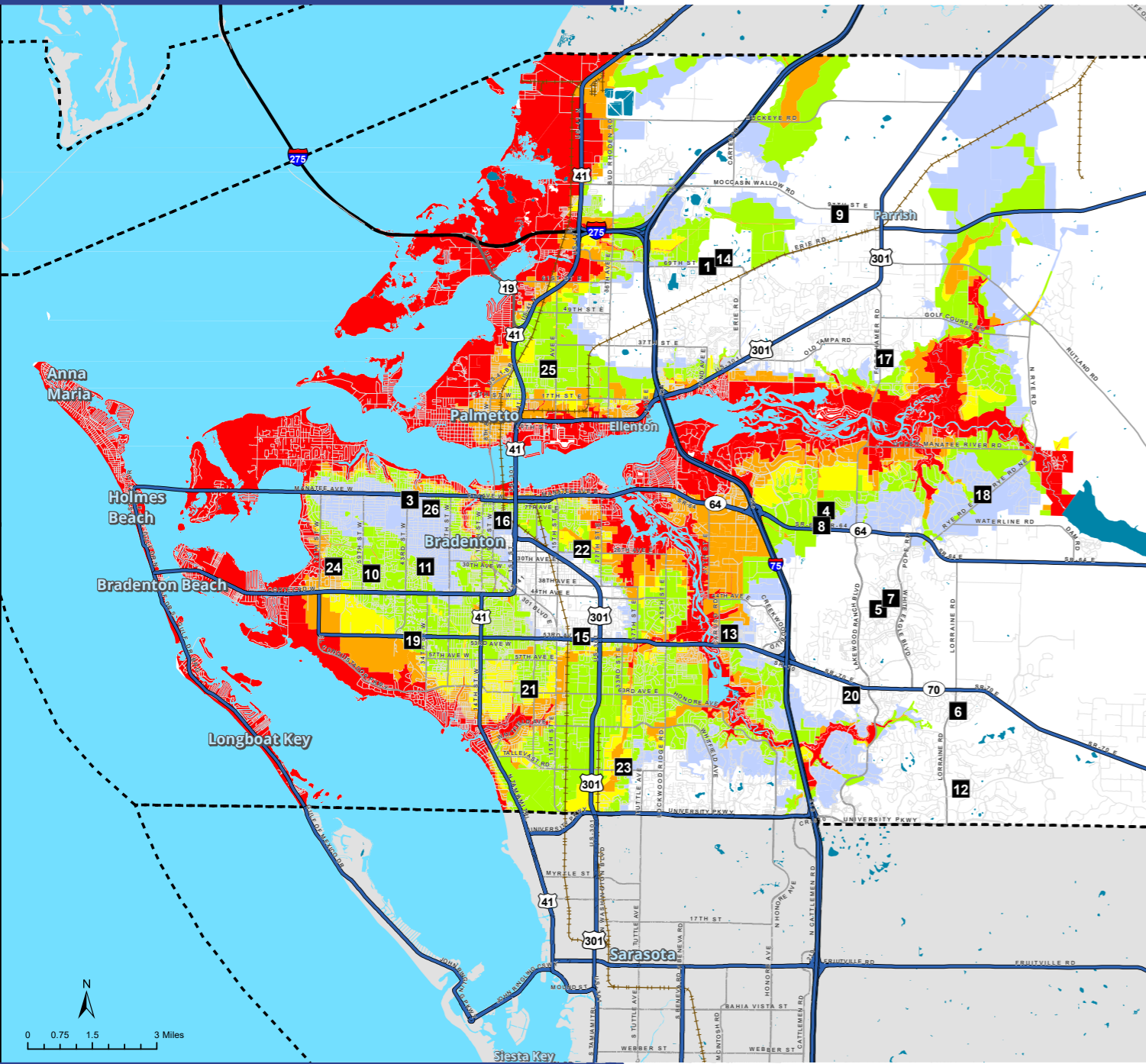
**813-845-0872 | UniversalRoof.com**



\*LIMITED TIME OFFER. Free warranty upgrade to Platinum Protection on Owens Corning® asphalt shingle roof replacements available to verified military veterans, active military, and first responders, including law enforcement officers, fire fighters, paramedics and EMTs. Not applicable on insurance jobs. Not valid with other offers or prior purchases. Offer must be requested at your initial appointment. Other restrictions may apply. Financing through third-party lender available on approved credit only. Conditions apply. See estimator for details. ©2023 Universal Roof & Contracting™ | Lic. CCC057165 & CBC1258484

†Non-prorated, transferrable Platinum Protection warranty with purchase of a full Owens Corning® asphalt shingle roof replacement.

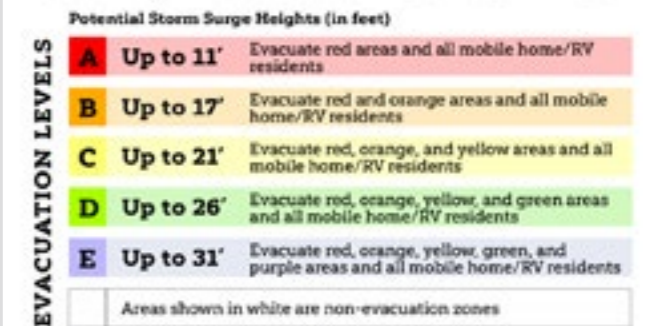
# MANATEE COUNTY



## FIND YOUR CLOSEST SHELTER ON THE MAP.

#	Pets Allowed	Shelter Name	Address
1		Mills Elementary School	7200 69th Street East, Palmetto
2		Myakka City Elementary School	37205 Manatee Ave., Myakka City
3		Miller Elementary School	601 43rd Street West, Bradenton
4		Freedom Elementary School	9515 State Road 64 East, Bradenton
5		Gullet Elementary School	12125 44th Ave. East, Bradenton
6		McNeal Elementary School	6325 Lorraine Road, Bradenton
7		Mona Jain Middle School	12205 44th Ave. East, Bradenton
8		Haile Middle School	9501 State Road 64 East, Bradenton
9		Harvey Elementary School	8610 115th Ave. East, Parrish
10		Sugg Middle School	3801 59th St West, Bradenton
11		Prine Elementary School	3801 Southern Parkway, Bradenton
12		Willis Elementary School	14705 The Masters Avenue, Bradenton
13		Braden River High School	6545 State Road 70 East, Bradenton
14		Buffalo Creek Middle School	7320 69th Street East, Palmetto
15		Oneco Elementary School	5214 22nd Street Court East, Bradenton
16		Rogers Garden Elementary School	515 13th Ave West, Bradenton
17		Williams Elementary School	3404 Fort Hamer Road, Parrish
18		Witt Elementary School	200 Rye Road, Bradenton
19		Lee Middle School	4000 53rd Avenue West, Bradenton
20		Braden River Middle School	6215 River Club Blvd., Bradenton
21		Daughtrey Elementary School	515 63rd Ave. East, Bradenton
22		Johnson K-8	2121 26th Ave East, Bradenton
23		Kinnan Elementary School	3415 Tallevast Road, Sarasota
24		Seabreeze Elementary School	3601 71st Street West, Bradenton
25		Tillman Elementary School	1415 29th Street East, Palmetto
26		Manatee High School	902 33rd Street Court West, Bradenton

## County Evacuation Guidelines



My Evacuation Level is (fill below):

Residents in mobile homes, boats, RVs, and manufactured homes **MUST EVACUATE** no matter where you are located in the county.

## CHECK YOUR EVACUATION LEVEL

- A) Red | You evacuate for all colors
- B) Orange | You evacuate for all but red
- C) Yellow | You evacuate for all but red + Orange
- D) Green | You evacuate for Green + Purple
- E) Purple | You evacuate for only purple

All Mobiles evacuate as if in a RED Zone.

Shelter openings vary with each emergency and will differ by size and intensity of a disaster. **Do not go to the shelter until local officials announce that the shelter is open.**

Stay tuned to local media and the County website for a listing of shelters, to include the Pet-Friendly Shelters, which will be opened for an event.



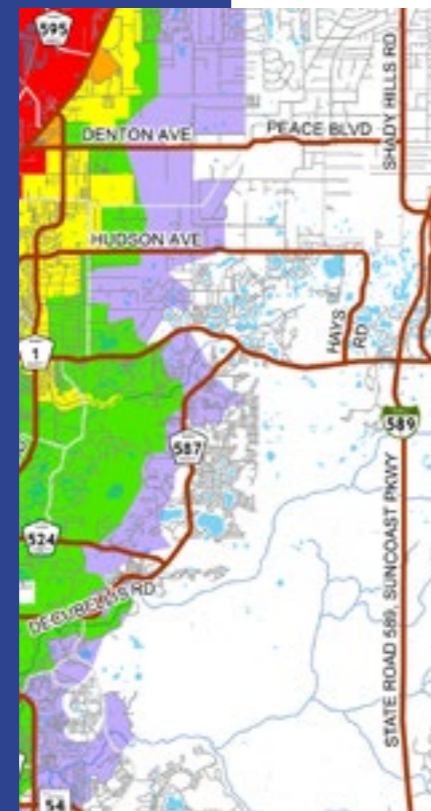
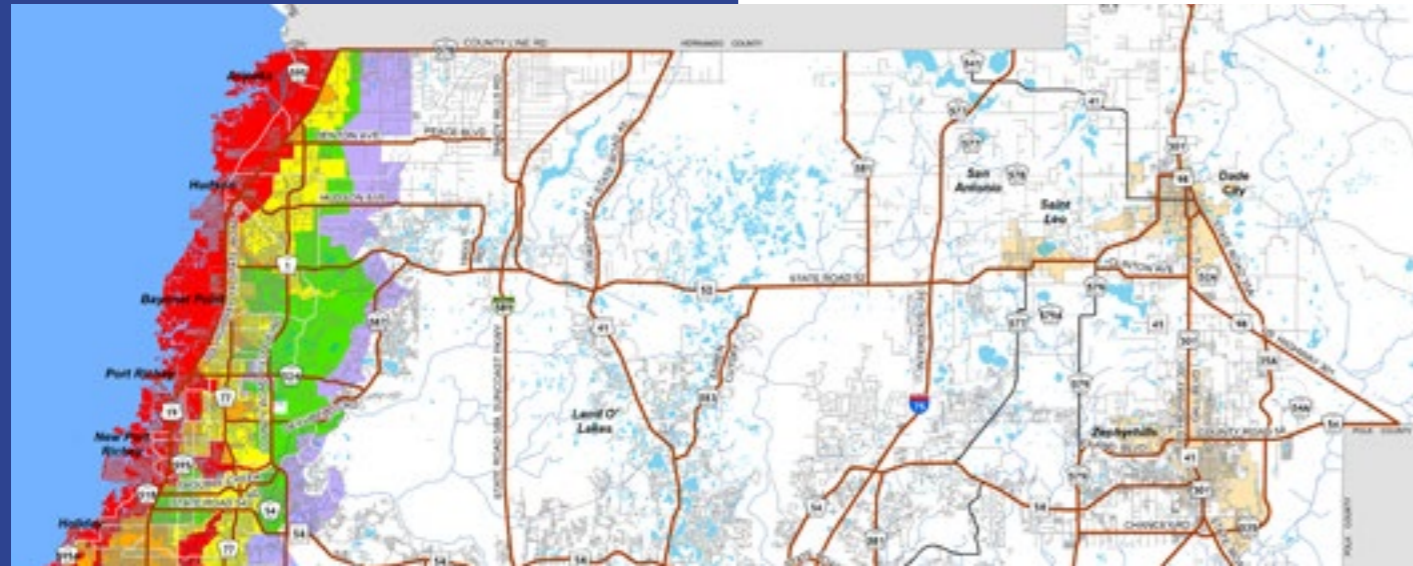
## Hurricane Threat

The color coded areas on the map are vulnerable to storm surge. Storm surge is produced by water being pushed towards the shore by the force of the winds moving around the storm.

Storm surge creates a path of destruction, wiping out structures as it rapidly surges inland and then recedes. This is a life threatening situation for anyone who ignores evacuation orders and stays in vulnerable areas.

Hurricanes are categorized on a scale of 1 to 5, depending on wind strength and destructive power.

# PASCO COUNTY



- Evacuation Routes
- Arterial Road
- Collector Road
- Residential Road
- City Limits

### Evacuation Zone

- Level A
- Level B
- Level C
- Level D
- Level E
- None



Serving Our Community  
to Create a Better Future

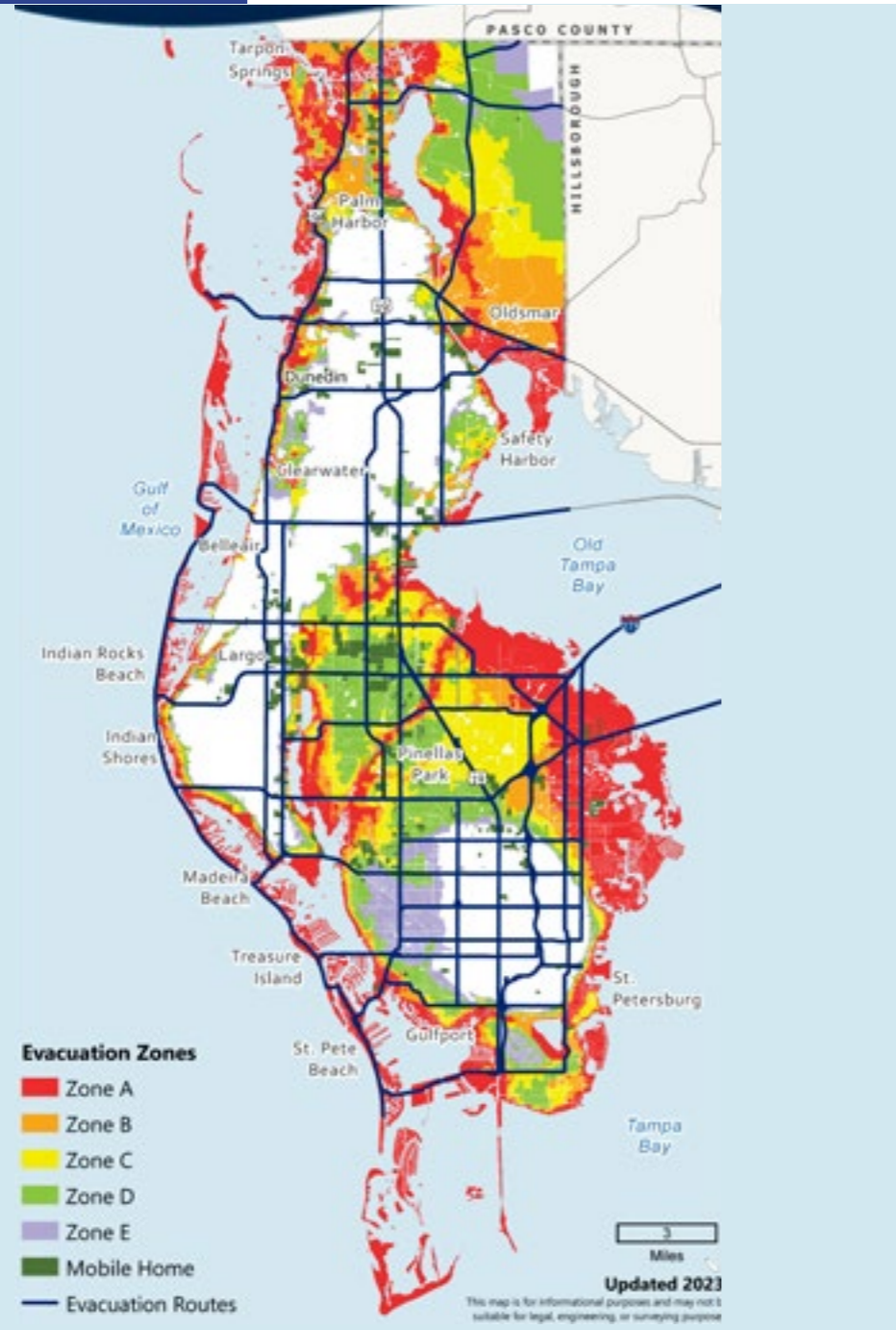
### LEGEND

Evacuation Levels	Potential Storm Tide Heights (FT)
Level A - Evacuate red areas and all manufactured home residents	To 11'
Level B - Evacuate red and orange areas and all manufactured home residents	To 17'
Level C - Evacuate red, orange, and yellow areas and all manufactured home residents	To 22'
Level D - Evacuate red, orange, yellow, and green areas and all manufactured homes	To 30'
Level E - Evacuate red, orange, yellow, green, and purple areas and all manufactured homes	To 36'



This map is for informational purposes only. The data contained herein is not collected under the supervision of, or approved by, a licensed surveyor. It is not intended for any legal use. The data does not meet the minimum technical standards under the Florida Administrative Code 61G17-8. The Pasco County Board of County Commissioners does not accept any responsibility for errors or omissions of any kind contained in the data herein. All products and derivations from the data contained herein must retain this disclaimer.

# PINELLAS COUNTY



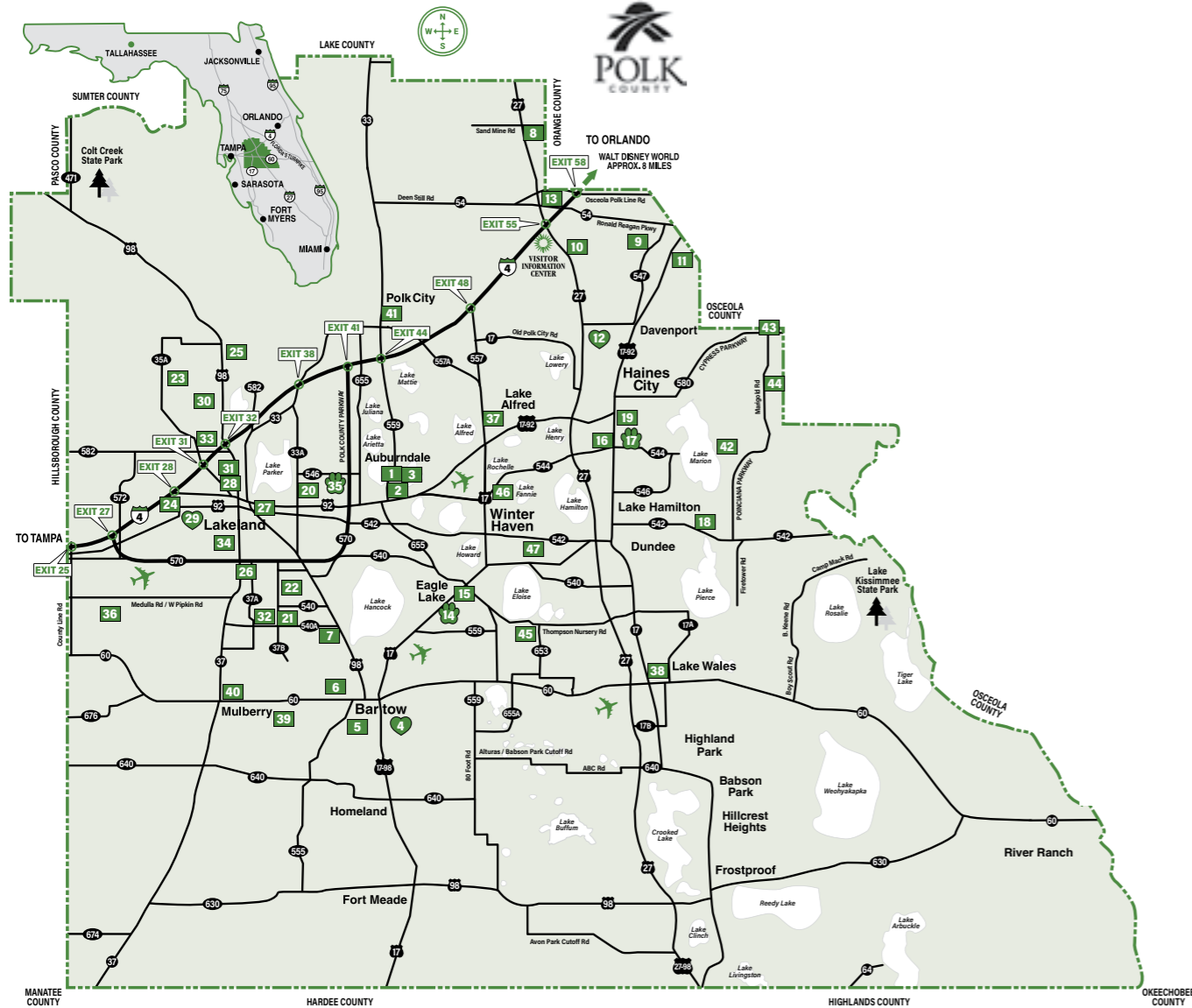
## PINELLAS COUNTY ONLINE RESOURCE

“Please note that not all shelters will be open for every evacuation. There may also be additional locations that are made available for sheltering. It is very important that you check for updates on available shelters before finalizing your plans.”

Shelters with addresses are listed online along with an interactive view of flood zones.

Please see “Online Resources” button below.

# POLK COUNTY



An initiative of the Polk County Board of County Commissioners



## 2023 POLK COUNTY PUBLIC SHELTERS POTENTIAL SHELTER LOCATIONS

### AUBURDALE

1. Auburndale High School
2. Jere L. Stambaugh Middle School
3. Walter Caldwell Elementary School

### BARTOW

4. Florida Department of Health-Polk Specialty Care Unit
5. Bartow High School
6. Stephens Elementary School
7. Spessard L. Holland Elementary

### DAVENPORT

8. Citrus Ridge Academy
9. Davenport School of the Arts

10. Horizons Elementary School
11. Loughman Oaks Elementary School
12. Ridge Community High School
13. Ridgeview Global Studies Academy

### EAGLE LAKE

14. Lake Region High School
15. Pinewood Elementary School

### HAINES CITY

16. Alta Vista Elementary School
17. Haines City High School
18. Sandhill Elementary School
19. Shelley S. Boone Middle School

### LAKELAND

20. Combee Elementary School
21. George Jenkins High School (Freshman Academy)
22. Highlands Grove Elementary School

23. Kathleen Elementary School
24. Kathleen High School
25. Lake Gibson High School
26. Lakeland Highlands Middle School
27. Philip O'Brien Elementary School
28. Lincoln Avenue Academy

### LAKE ALFRED

29. McKeel Academy of Technology
30. Dr. N. E. Roberts Elementary School

### LAKE HAMILTON

31. Rochelle School of the Arts
32. Scott Lake Elementary School
33. Sleepy Hill Elementary School
34. Southwest Elementary School

### LAKE WALE

35. Tenoroc High School
36. R. Bruce Wagner Elementary School
37. Karen M. Siegel Academy

### LAKE WALES

38. Spook Hill Elementary School

### MULBERRY

39. Mulberry Middle School
40. Purcell Elementary School

### POLK CITY

41. Donald Bronson Community Center

### POINCIANA

42. Lake Marion Creek Middle School
43. Laurel Elementary School
44. Palmetto Elementary School

### WINTER HAVEN

45. Chain of Lakes Elementary School
46. Jewett School of the Arts
47. Winter Haven High School

♥ = Special Needs Shelter. 🌿 = Pet-Friendly Shelter. 🏠 = Primary Shelter.  
See reverse side for directions to individual shelters.

**DO NOT PROCEED TO ANY SHELTER UNTIL YOU HAVE CONFIRMED THAT IT IS OPEN AND OPERATING.**

Visit **Central Florida**  
For accommodations, contact  
1 (800) 828-7655 or (863) 420-2586  
VisitCentralFlorida.org



**CITIZENS INFORMATION LINE**  
When Activated  
(CIL) (863) 401-2234  
Toll Free: 1 (866) 661-0228  
polk-county.net

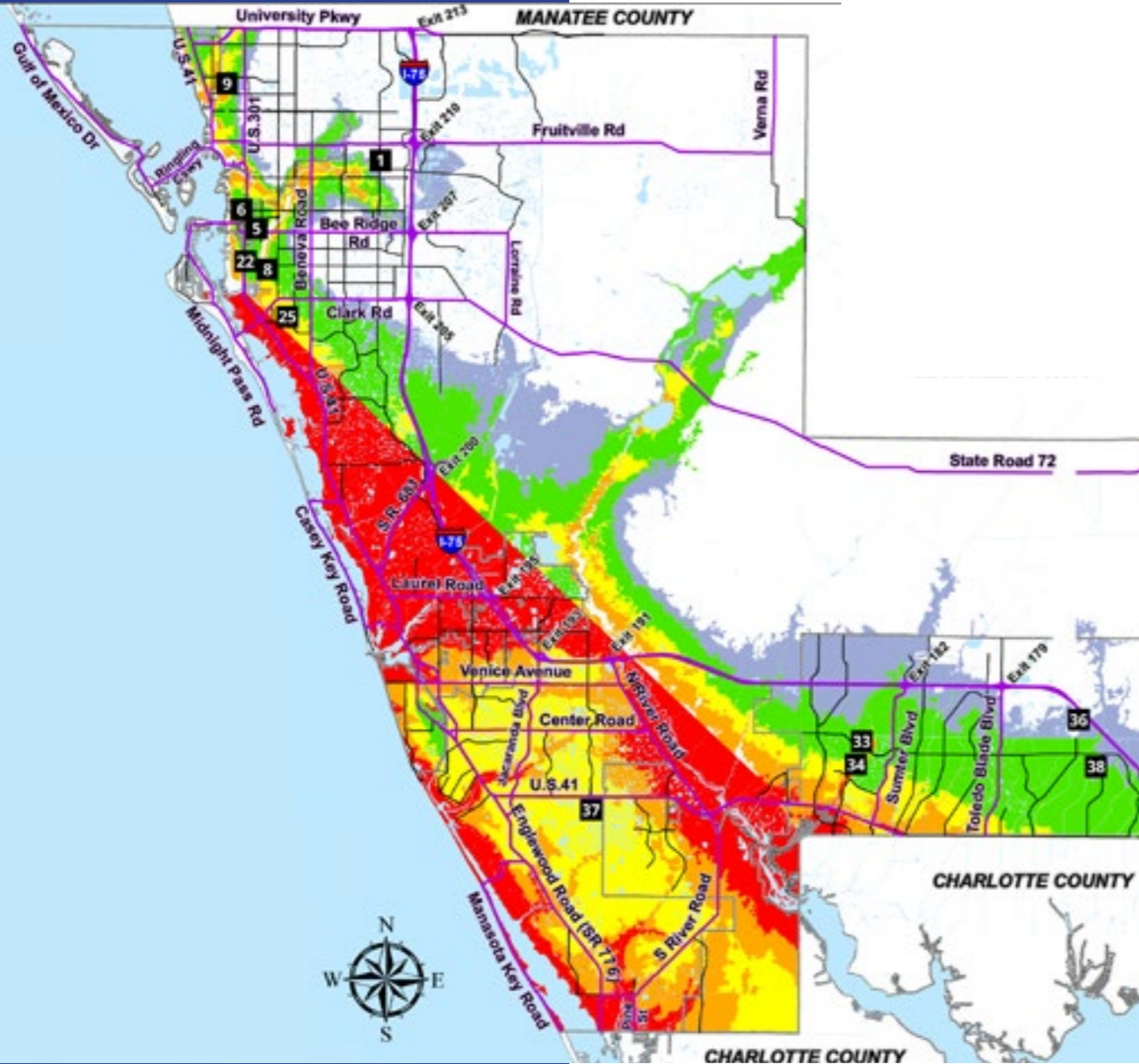
Facebook.com/PolkCountyEM  
Twitter@PolkEmergency



- ### PUBLIC SHELTER POLICIES
1. All shelters are **not** automatically activated for each possible emergency. Shelters are opened as they are needed. They are not preassigned by geographic area.
  2. For shelter information, monitor local radio and television or call the CIL at (863) 401-2234.
  3. Prepare a 7-day survival kit ready to take with you. A shelter won't have the comforts of home so make sure to take what you'll want or need.
  4. **NO PETS** (except at designated pet-friendly sites), **NO WEAPONS** and **NO ALCOHOLIC BEVERAGES** are allowed in Public Shelters.
  5. For information about pet-friendly shelters, call the Emergency Management office at (863) 298-7000 or polk-county.net/EM.
  6. For further information, visit polk-county.net/hurricane-preparedness and consult the reverse side of this brochure.



# SARASOTA COUNTY



## Find your closest Evacuation Center on the map.

#	Evacuation Center	Address
1	Fruitville Elementary School	601 Honore Ave., Sarasota
5	Brookside Middle School	3636 S. Shade Ave., Sarasota
6	Southside Elementary School	1901 Webber St., Sarasota
8	Riverview High School	1 Ram Way, Sarasota
9	Booker High School	3201 N. Orange Ave., Sarasota
22	Phillippi Shores Elementary	4747 S. Tamiami Trail, Sarasota
25	Gulf Gate Elementary School	6500 S. Lockwood Ridge Rd., Sarasota
33	North Port High School	6400 W. Price Blvd., North Port
34	Heron Creek Middle School	6501 W. Price Blvd., North Port
36	Woodland Middle School	2700 Panacea Blvd., North Port
37	Taylor Ranch Elementary School	2500 Taylor Ranch Trail, Venice
38	Atwater Elementary School	4701 Huntsville Ave., North Port

### Dogs and Cats

All Sarasota County Evacuation Centers welcome properly crated and supplied dogs and cats. Current vaccination records are required for dogs and cats.

### COVID-19 Precautions

To see the latest information on hurricane evacuation centers and COVID-19, please visit [scgov.net/beprepared](https://scgov.net/beprepared).

## County Evacuation Guidelines

Potential Storm Surge Heights (in feet)

EVACUATION LEVELS	Surge Height	Evacuation Guidelines
A	Up to 12'	Evacuate red areas and all mobile home/RV residents
B	Up to 16'	Evacuate red and orange areas and all mobile home/RV residents
C	Up to 20'	Evacuate red, orange, and yellow areas and all mobile home/RV residents
D	Up to 26'	Evacuate red, orange, yellow, and green areas and all mobile home/RV residents
E	Up to 32'	Evacuate red, orange, yellow, green, and purple areas and all mobile home/RV residents

Areas shown in white are non-evacuation zones

### Evacuation Routes

Find your home's Evacuation Level at: [scgov.net/beprepared](https://scgov.net/beprepared)

My Evacuation Level is (fill below):

## CHECK YOUR EVACUATION LEVEL

- A) Red | You evacuate for all colors
- B) Orange | You evacuate for all but red
- C) Yellow | You evacuate for all but red + Orange
- D) Green | You evacuate for Green + Purple
- E) Purple | You evacuate for only purple

All Mobiles evacuate as if in a RED Zone.

# Strong, powerful, and mighty.

(We're talking about concrete block)



Visit [BlockStrong.com](http://BlockStrong.com) to see all of the reasons you should be using solid concrete block construction for your home.